



Nabodhara Builders Ltd.

NABODHARA — HEIGHTS — 33

33, EAST RAMPURA, HIGH SCHOOL ROAD
DHAKA



LOCATION

Highlights



NABODHARA
HEIGHTS 33

Hospitals

- Better Life Hospital

Grocery

- Rampura Bazar

Shopping Malls

- Better Life Shopping mall
- Police Plaza
- Aarong Gulshan

Educational Institution

- Brac University
- East West University
- East Rampura High School



AT A GLANCE



NABODHARA HEIGHTS 33"- A 10(TEN) Storied lively residential building situated on most posh, quiet and calm area in House# 33, East Rampura High School Road, Dhaka-1219.

Its aesthetic view offers a new and modern architectural creation and the interior arrangement is especially made for the individuals of discerning taste of quality and accustomed to rich and healthy living environment.

NOBODHARA BUILDERS LTD. has put its best endeavor to bring comfort by arranging most modern civic amenities required for quality living. While designing, utmost effort has been given to maximize the functional aspects and aesthetic aspects as well.



House# 33, East Rampura
High School Road, Dhaka-1219



3/4 Bed Apartment



Built over 13 Katha Land



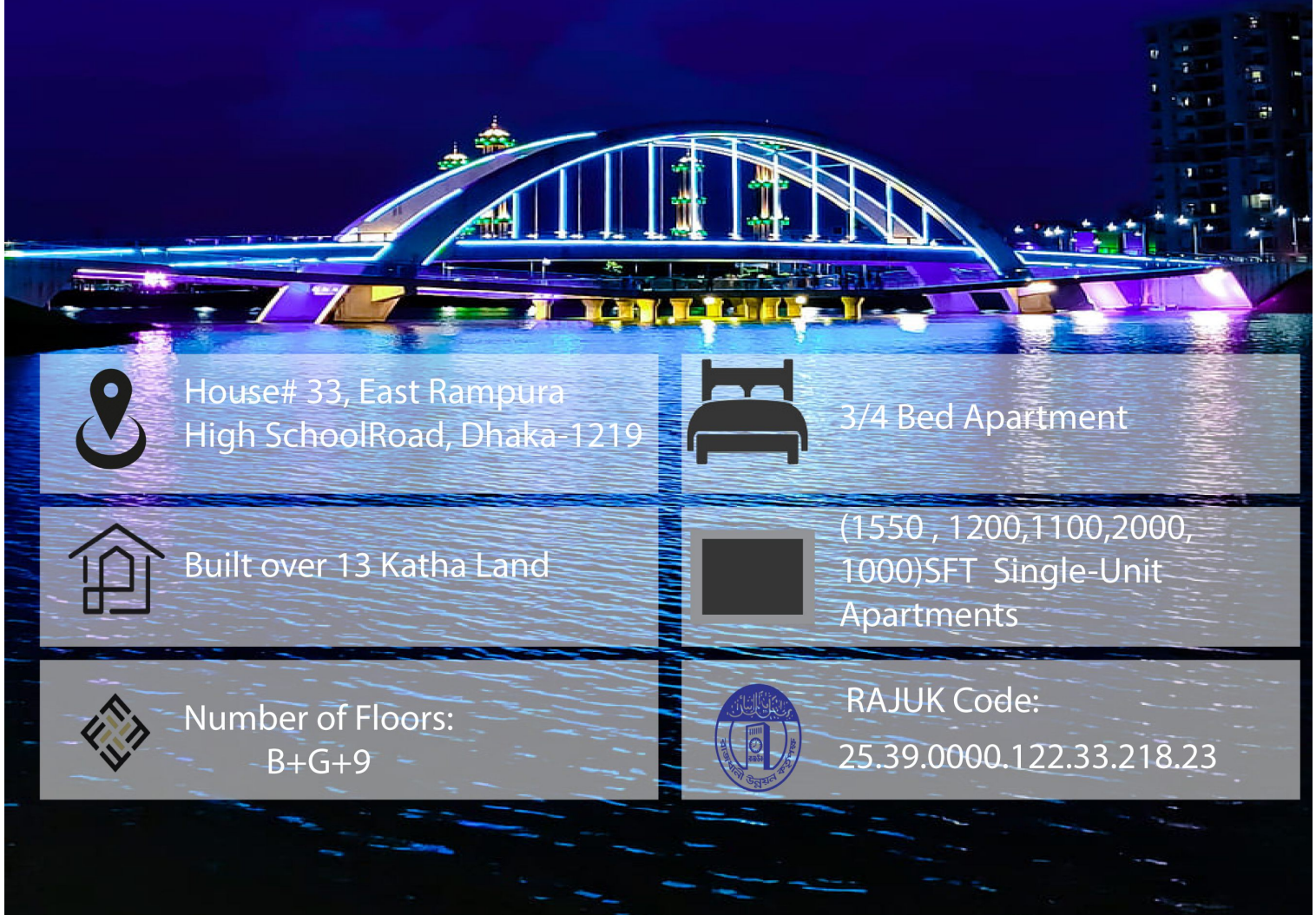
(1550, 1200, 1100, 2000,
1000)SFT Single-Unit
Apartments



Number of Floors:
B+G+9



RAJUK Code:
25.39.0000.122.33.218.23





FEATURES & AMENITIES

ENTRANCE :

- Project Name with title & logo in stylish letter on attractive back ground
- Adequate security/guard light.
- Security control and guard room.

CAR PARKS & DRIVE WAY :

- Wide drive way for easy and comfortable
- Reserved car parks marking.

RECEPTION :

- Intercom for full function internal communication.
- 12"x12" Ceramic Glazed floor tiles in floor.

LOBBY & STAIRS :

- Homogeneous floor tiles in floor of all lobby.
- Homogeneous nosing stair tiles.
- Stainless Steel Handrailing with M.S Square box Post.

UNDER GROUND WATER RESERVOIR :

- Water – proof , Concrete, Under ground reservoir with capacity to store water for three days.
- One full function pump.

OTHER GROUND FLOOR FACILITIES :

- Caretaker's and Guard room.
- Toilet for Caretaker, Driver and Guards.

ROOF TOP :

- Standard height well designed parapet well .
- Adequate rain water outlets.
- Concrete, water proof over head water reservoir with 1.5 days capacity.

GENERATOR :

- One brand new imported 3 KW emergency generator with full warranty and One year free-service facility from manufacture which shall empower.
- Security and common area lighting , Two light points & Two fan points in each apartment.

INTERCOM :

- Imported , brand new Intercom system connecting all apartments to reception through concealed wiring.

WATER PUMP :

- One imported brand new pump one full operation.
- Provision for One TV & One telephone points in all apartments.

ELECTRICAL SUPPLY :

- 220 Volt (1 phase) main cable electric supply line from DESCO/DESA with distribution board , panel and circuit breakers.

GENERAL APARTMENT FEATURES WALLS :

- Exterior and interior wall 5" brick partition . The wall in super structure shall be of water based emulsion (Snowcem) paint on all internal wall and outer portion of wall have plastered and primed (Snowcem)

FLOORS:

- Company standard Ceramic glazed floor tiles , 4" skirting & Bathroom door seal (RAK or equivalent). (16" x16" or 24" x24")

WINDOWS :

- Sliding aluminum windows as per perspective design. ■ External windows to have rain water protective seal. ■ 5mm glass with rubber & 3" channel & mohair lining.
- MS flat bar safety grill in all external windows.

DOORS :

- Company standard solid decorative wooden / decorative flush main entrance with door lock, door chain, apartment no, calling bell switch & cheek viewer.
- All other door frames will be of solid wood (Mehgoni) & door shutters of veneer flush door with French polish & round mortise lock. ■ PVC doors in toilet.

TOILET :

- Company standard commode /Pan and basin in all toilets (RAK karla).
- Company standard ceramic tiles in wall up to false ceiling & matching tiles in floors . (RAK or equivalent). (8"x12")
- Provision for fresh water line and geyser in master toilet.
- One extra large mirror in master toilets and mirrors in all other toilets with over head lamp point.
- Good quality local chrome plate fittings (pillar cock ,Shower,Bib-cock, Stop –cock etc .)
- Local toilet accessories set (Towel rail, Soap case, Toilet paper holder) with warranty

KITCHEN :

- Company standard Ceramic glazed tile in floor . . (RAK or equivalent) (12"x12")
- Company standard ceramic tile in wall up to 7' from floor . (RAK or equivalent)
- One imported stainless steel sink .
- One gas outlet point ready for connection.
- One 8" exhaust fan Point suitably located near burner.

PAINT :

- Distempered in a internal walls and distempered ceiling in soft colors (Berger)
- All exterior walls will have " Weather Coat / Durocem / Snowcem."

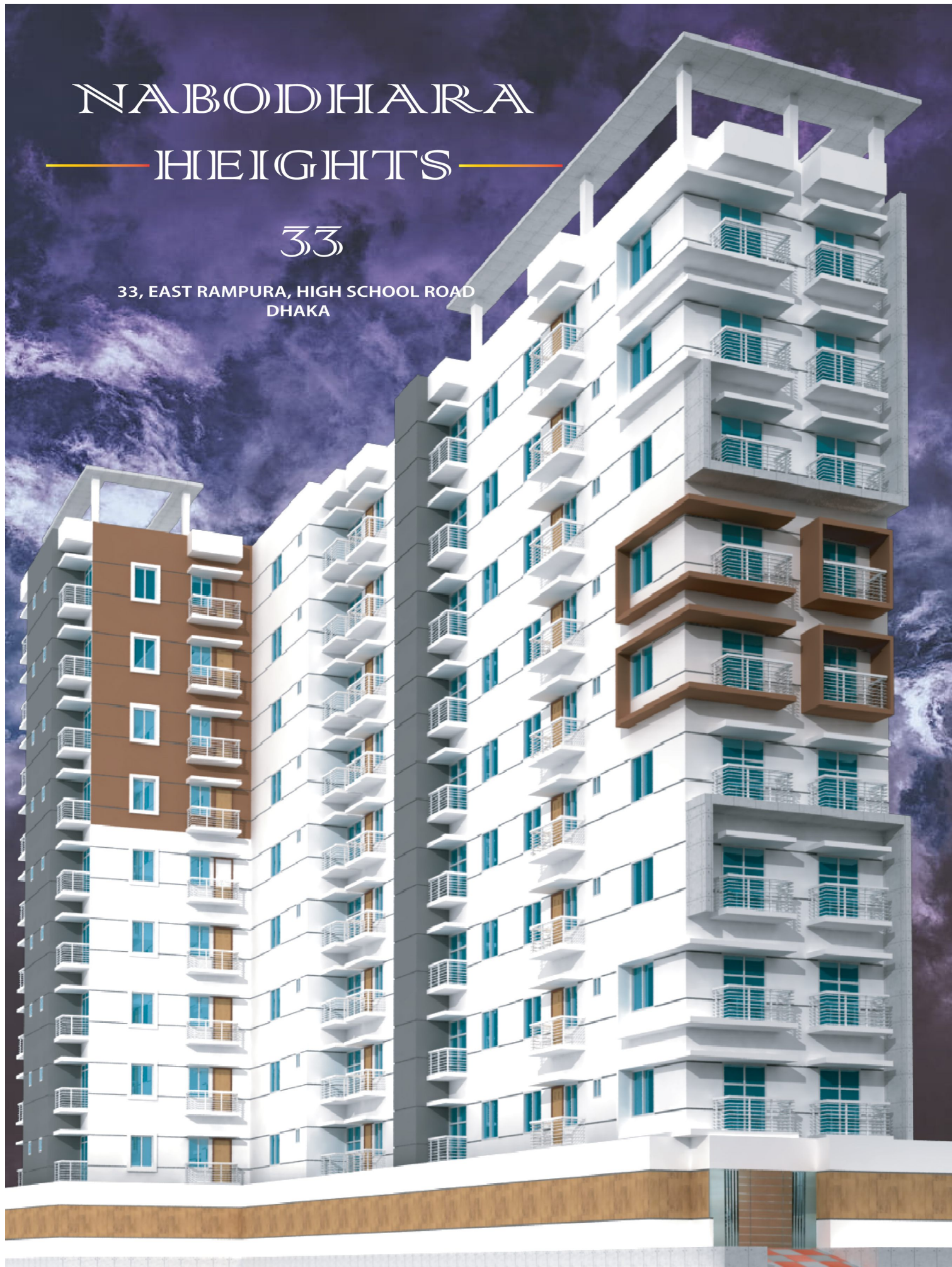
ELECTRICAL :

- Standard concealed wiring in PVC conduits for light , flushed fan hooks, Socket point.
- Imported MK type switches/ Sockets in all room.
- Quality local wires (Citizen / BRB Sunshine)etc.
- Imported circuit breakers in distribution boxes.
- Provision for air –conditioners in One bed rooms.

NABODHARA HEIGHTS

33

33, EAST RAMPURA, HIGH SCHOOL ROAD
DHAKA



NABODIHARA HEIGHTS 33

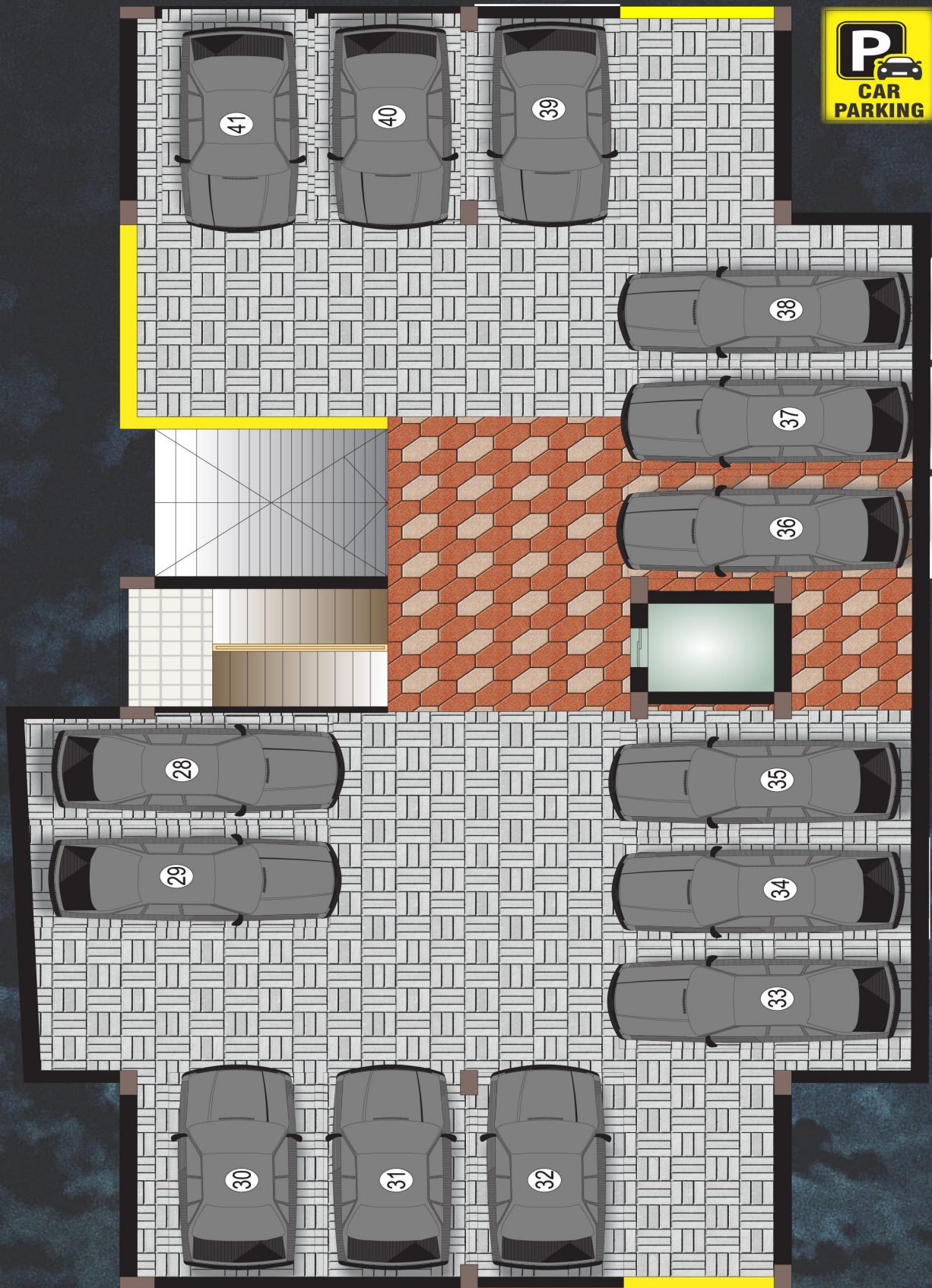
33, EAST RAMPURA, HIGH SCHOOL ROAD, DHAKA

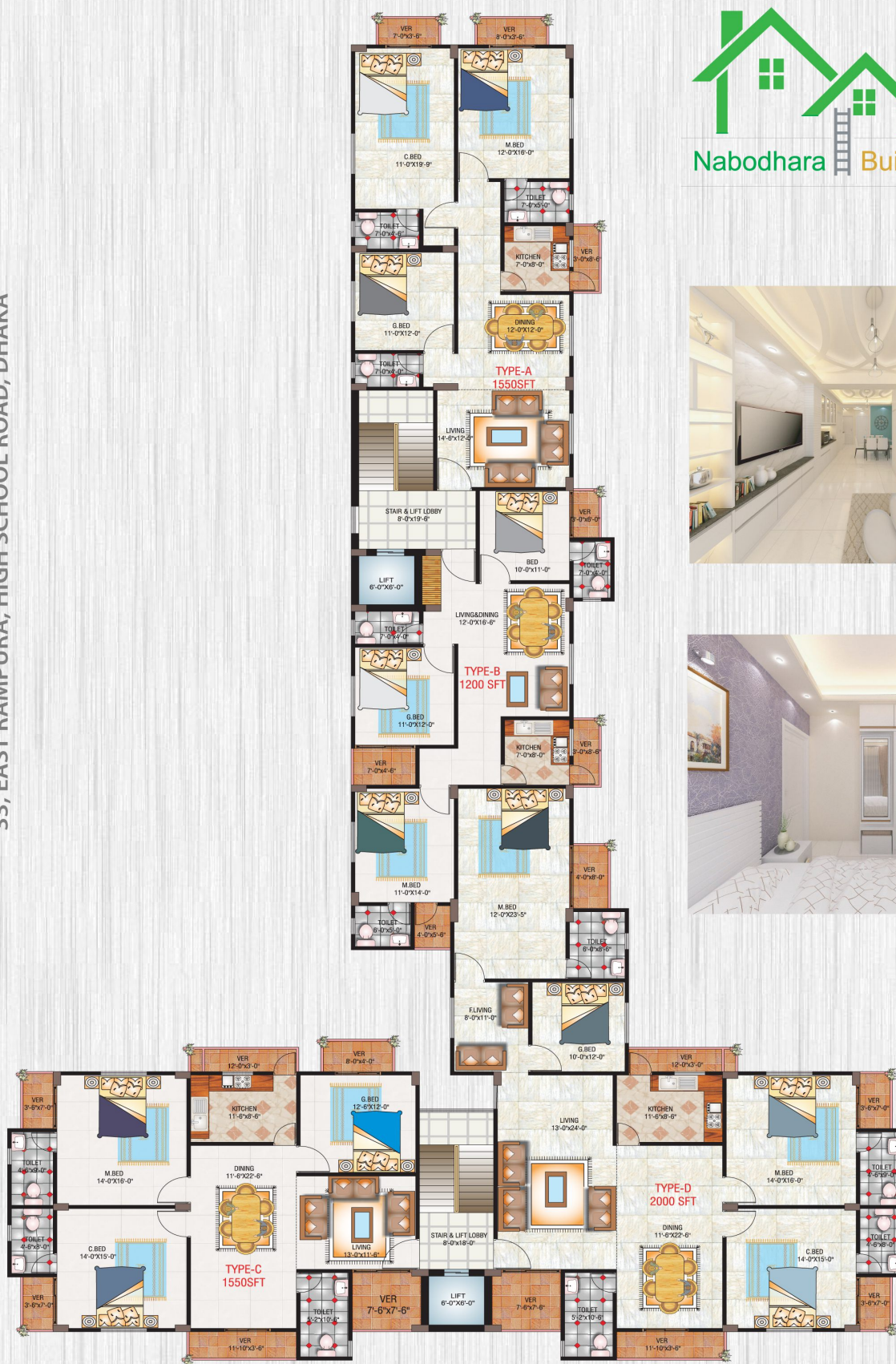


Ground Floor Plan 27 NOS
Driver waiting with toilet facilities



Basement Floor Plan 14 NOS
Driver waiting with toilet facilities





Typical Floor Plan 4 Unit



Nabodhara Builders Ltd.



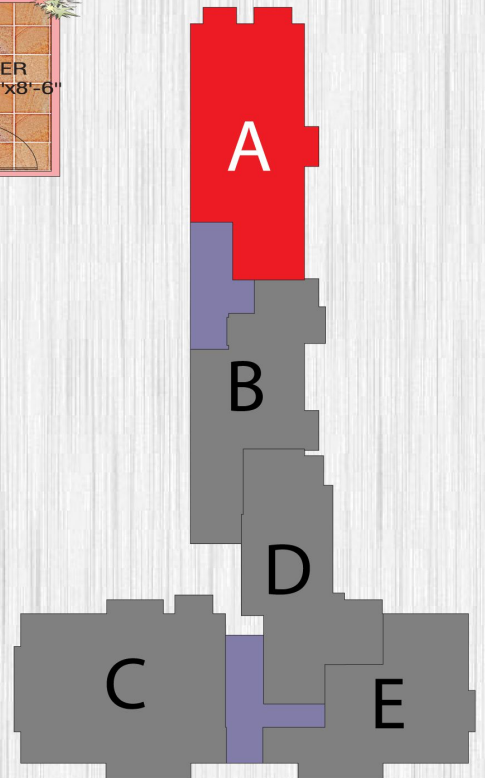
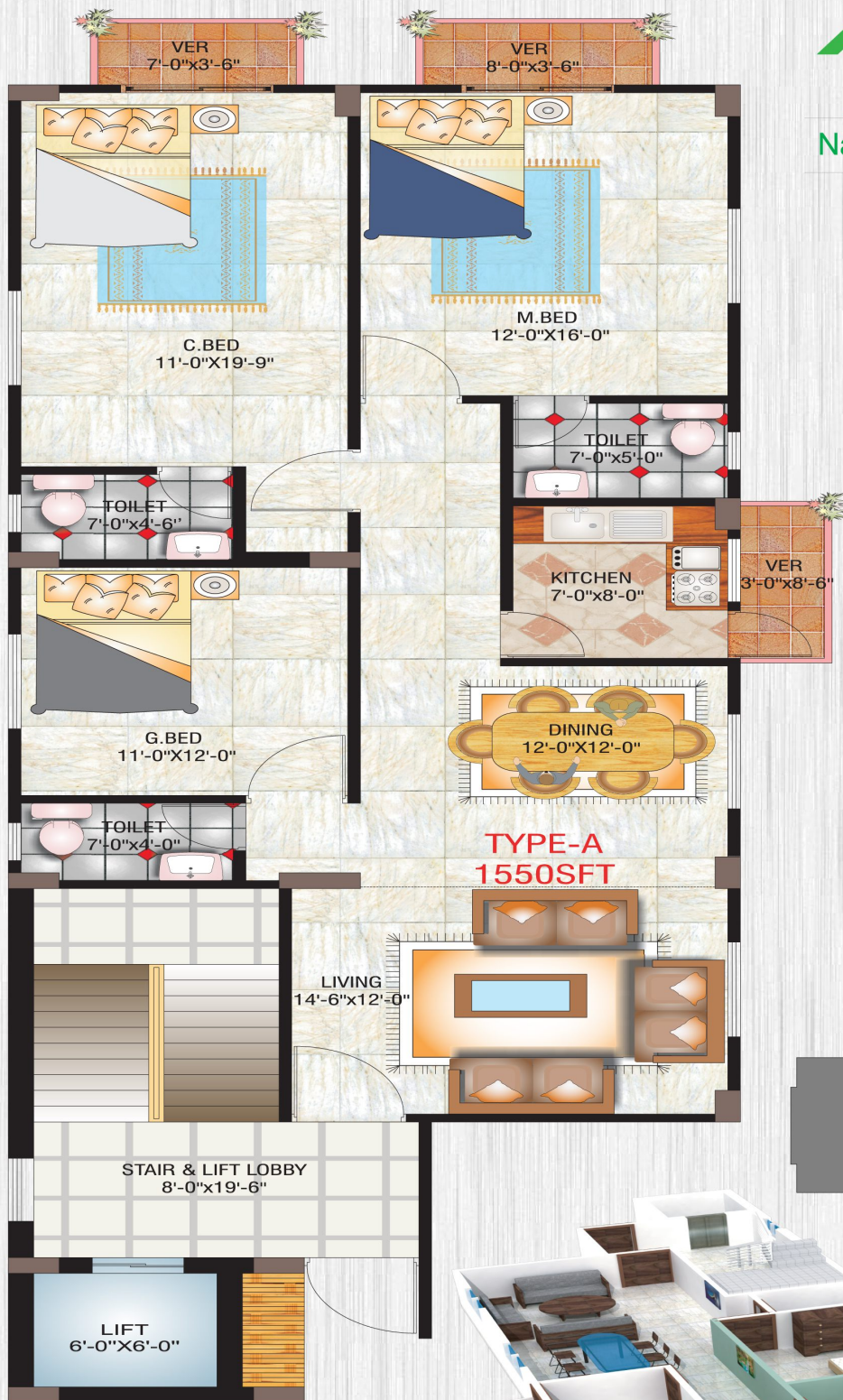
Typical Floor Plan 5 Unit

NABODHARA HEIGHTS 33

33, EAST RAMPURA, HIGH SCHOOL ROAD, DHAKA

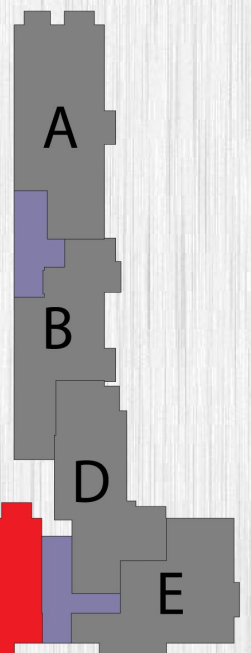
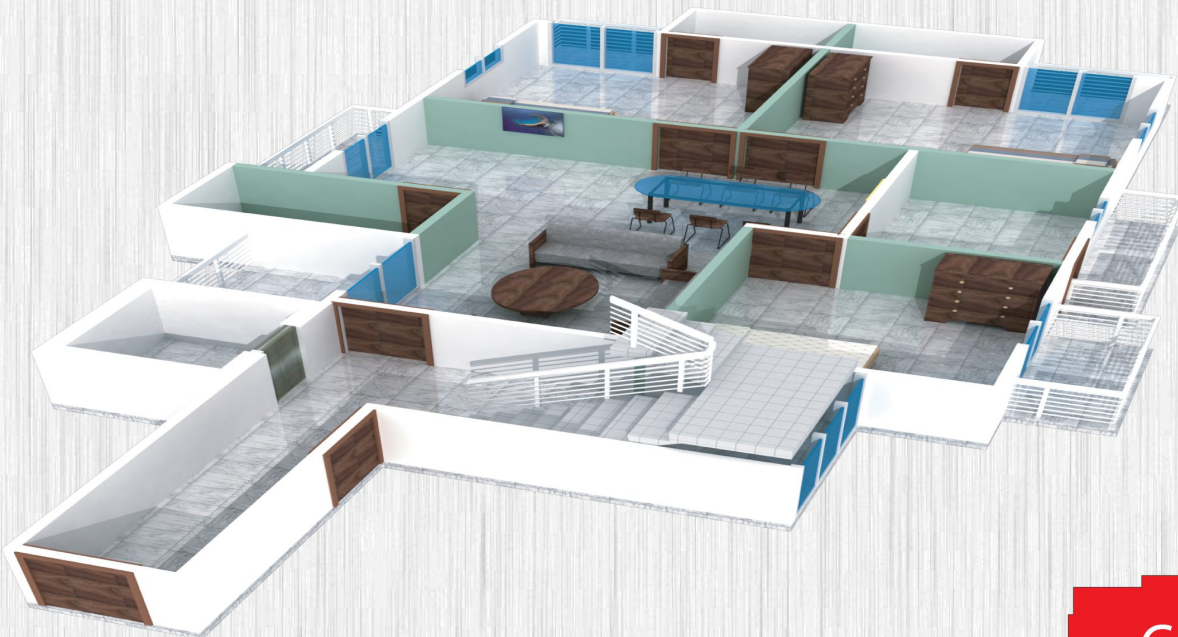


Nabodhara Builders Ltd.



TYPE-A 1550 SFT



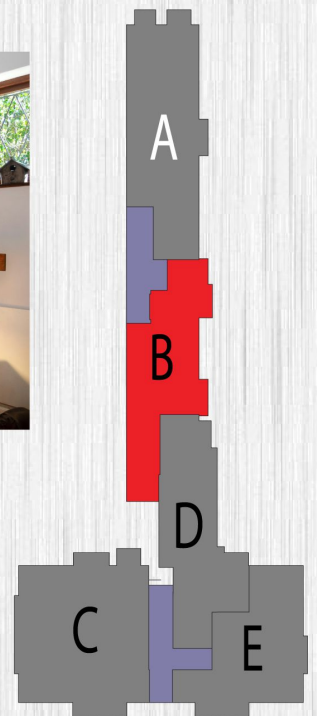


NABODHARA HEIGHTS 33

33, EAST RAMPURA, HIGH SCHOOL ROAD DHAKA



TYPE-B 1200 SFT





Nabodhara Builders Ltd.



 **TYPE-D 2000 SFT**

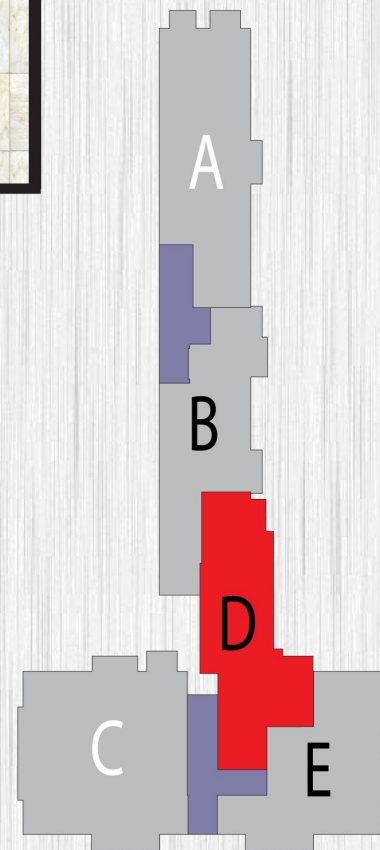
33

NABODHARA HEIGHTS

33, EAST RAMPURA, HIGH SCHOOL ROAD, DHAKA

NABODHARA HEIGHTS 33

33, EAST RAMPURA, HIGH SCHOOL ROAD DHAKA



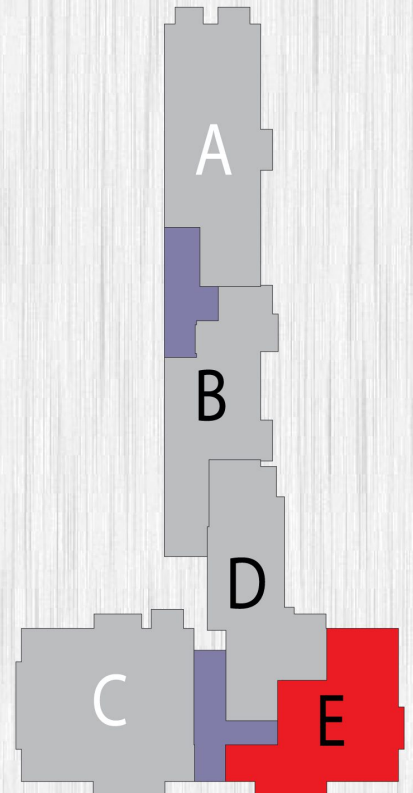
TYPE-D 1100 SFT



Nabodhara Builders Ltd.



TYPE-E 1000 SFT



TERMS & CONDITIONS

APPLICATION :

Application for allotment on enclosed application form along with earnest money or booking money. On acceptance an allotment letter will follow.

PAYMENT :

All payments, Reservation money, Installment etc. Shall be made by crossed cheque, Pay-order and bank draft in favor of **Nabodhara Builders Ltd.** for which proper receipt will be issued. Foreigners and non-resident Bangladeshi may pay in foreign Exchange through bank.

DELAY IN PAYMENTS :

All payment should be made on date as installment schedule to ensure timely completion of construction work. Delay in payment beyond the due date, the allottees will be liable to pay charge of 1% (One percent) per day on the amount of payment delay .

CANCELLATION OF ALLOTMENT :

The company shall have the right to cancel the allotment if the payment of installment is delayed by three months or at end of grace period of 15 days and after final intimation to the allottees by special messenger or registered post at the address given in the application form . In such an event the total amount deposited shall be refunded after deduction Taka 100000.00 (one lac) only and after resale of the apartment in question.

REGISTRATION :

After adjustment of 100% of total price & all other charge / dues including extra charges shall execute a registration .The allottee shall bear all costs related with stamp duties, registration fees, Taxes, VAT, etc. including legal and miscellaneous expenses likely to be incurred in connection with land and apartment transfer. (that is all govt. Cost).

TRANSFER OF APARTMENT

Until all the payment is made in full, then allottees shall be transfer or sale the apartment to the third party. Allottee must be pay tk.50,000/- for each flat.

SERVICE FACILITIES COST :

All connection fees / charges, security deposits and other incidental expenses relating to Gas, Power, Sewerage, Water connection electrical substation cost etc. Are not included in the Price of Apartment. The allottee/ Peuresasers will also make these Payments. in

COMPLETION TIME :

Construction is scheduled to be completed by 31st JULY 2021 The time schedule may be extended 6(six) month due to non availability of materials and unforeseen circumstances, which are beyond the control of company.

CO-OPERATIVE SOCIETY :

The allottees shall form a committee within themselves for managing affairs of common interest. Each allotted shall deposit Tk. 10000.00 (Ten thousand) only towards a reserve fund for initial common service expenses of the Complex.

LOAN FACILITY :

If the buyer desires then company will help obtain bank loan on usual terms & condition.

N:B: The company may make any change in specification, design and layout of the apartment / project if it becomes necessary.

Corporate Office:

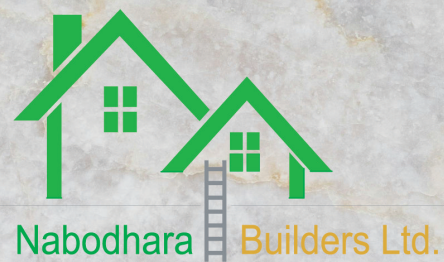
Nobodhara Rob-Vanu Tower
25, koratitola, Shamibag, Gendaria, Dhaka-1203

Hotline:

01896274652, 01896274651

E-mail: marketing@nabodharabuildersltd.com

www.nabodharabuildersltd.com



GENERAL DISCLAIMER

Information contained in this brochure is subject to change
The measurements are approximate. [lustrations provided are
only to facilitate presentation Apartments are sold unfurnished
Furniture and fixtures are not part of the offer or contract Features
and amenities may vary as per availability based on market
prices/design requirement/price fluctuation

MESSAGE FROM THE MANAGING DIRECTOR



DEAR VALUED CUSTOMERS,

WARM GREETINGS FROM NABODHARA BUILDERS LIMITED!

IT GIVES ME IMMENSE PLEASURE TO EXTEND MY HEARTFELT GRATITUDE TO ALL OF YOU WHO HAVE PLACED YOUR TRUST IN OUR VISION, OUR VALUES, AND OUR COMMITMENT TO EXCELLENCE. AT NABODHARA, WE BELIEVE THAT A HOME IS MORE THAN JUST A STRUCTURE – IT IS A FOUNDATION FOR DREAMS, MEMORIES, AND A BETTER FUTURE.

SINCE OUR INCEPTION, WE HAVE BEEN DRIVEN BY A PASSION FOR QUALITY, INTEGRITY, AND INNOVATION. EVERY PROJECT WE UNDERTAKE IS A REFLECTION OF OUR DEDICATION TO CREATING SPACES THAT INSPIRE COMFORT, COMMUNITY, AND PRIDE. YOUR CONTINUED SUPPORT AND CONFIDENCE HAVE BEEN THE PILLARS OF OUR SUCCESS, AND WE REMAIN COMMITTED TO DELIVERING OUTSTANDING REAL ESTATE SOLUTIONS THAT EXCEED EXPECTATIONS.

AS WE LOOK FORWARD TO THE JOURNEY AHEAD, WE PROMISE TO UPHOLD THE HIGHEST STANDARDS IN CONSTRUCTION AND CUSTOMER SERVICE, WHILE CONTRIBUTING TO A BRIGHTER, MORE SUSTAINABLE TOMORROW.

THANK YOU FOR BEING A PART OF THE NABODHARA FAMILY.

WARM REGARDS,

MD SHAJAHAN MIA
MANAGING DIRECTOR
NABODHARA BUILDERS LIMITED